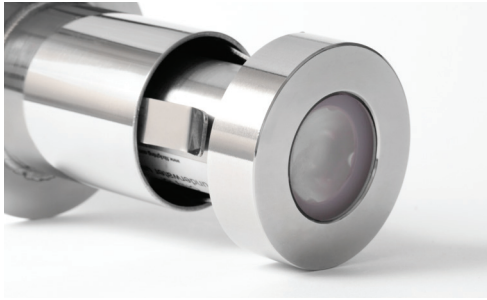


# Arpool S

Specifications Sheet



## Ordering Information

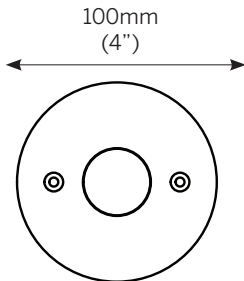
Model	Application	Power <sup>2</sup>	Color Temp.	Optics	Voltage	Options
AS	TM TS	H	30	SP FL	12V	C C6 C9
		L	40			
		L	RGB RGBW			

### Application

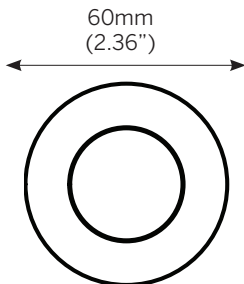
- Fountains and water features
- Small medium pools
- Wall and stair installation
- Installation depth up to 3m
- Max tile thickness 25mm
- Chlorine and saline environment
- Recommended installation depth 0.3m-0.6m
- DMX, DALI, 0-10V compatible
- outside water operation allowed
- Surface mount\*

(use Arpool S Surface product)

### Trim (TM)



### Trimless (TS)



### Luminaire

- UL STD 676, submersible (only), IP68, pool and fountain applications, max depth 3m (10')
- Body construction SS316L marine grade
- Thermal fold back technology
- Installation housing, SS316L marine grade construction, direct concrete pour
- Supplied with oil and water resistant 3m (10') feed cable standard, single color 2x1mm, RGB 4x1mm, RGBW 5x1mm

### Dimensions

- TM = 100mm x 208mm (4"ø x 8.2")
- TS = 60mm x 208mm (2.36"ø x 8.2")

### Power<sup>2</sup>

- H - 3.6W 3000/4000K, 230lm
- L - 1.2W 3000/4000K, 83lm
- L - 3.6W/RGB  
R 1.2W, G 1.2W, B 1.2W
- L - 4.8W/RGBW  
R 1 W, G 1.2W, B 1.2W, W 1.2W

(delivered lumen output)

### Color Temperature

- 30 - 3000K
- 40 - 4000K
- RGB
- RGBW
- 2 Step MacAdam
- CRI: > 85

### Optics

- SP - Spot - 10 °
- FL - Flood - 36 °

### Voltage

- 12 - 12Vdc fixture voltage

### Options

- C - standard feed cable 3m ( 10' )
- C6 - luminaire supplied with 6m (20') feed cable
- C9 - luminaire supplied with 9m (20') feed cable

### Installation Housing Order Codes

- AS402- (TM)
- AS406- (TS)

### Power Supply

#### Non-Dim

- 101052 - OT 30 W, 12Vdc, 220V - 240Vac, IP65
- 101053 - OT 60W, 12Vdc, 220V - 240Vac, IP65
- 100879 - OT 120W, 12Vdc, 220V - 240Vac, IP65

#### Single color Dim

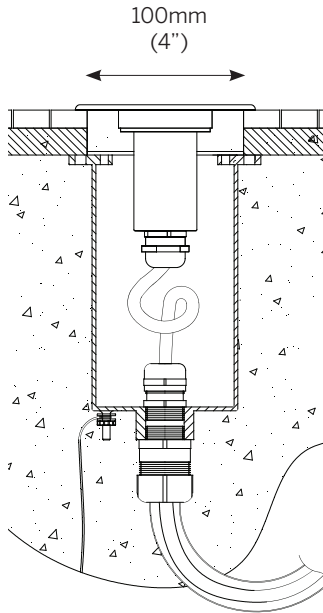
- 101047 - OT DALI DIM 120W
- 101046 - OT DIM 1-10V 120W

#### RGB

- 101202 - OT DMX DIM RGB 3x48W
- 102345 - ELDOLED LINEAR DRIVE 100/S 12-24V, 100W 4CH DALI DMX

Installation Detail

**Trim (TM)**



**Trimless (TS)**

